
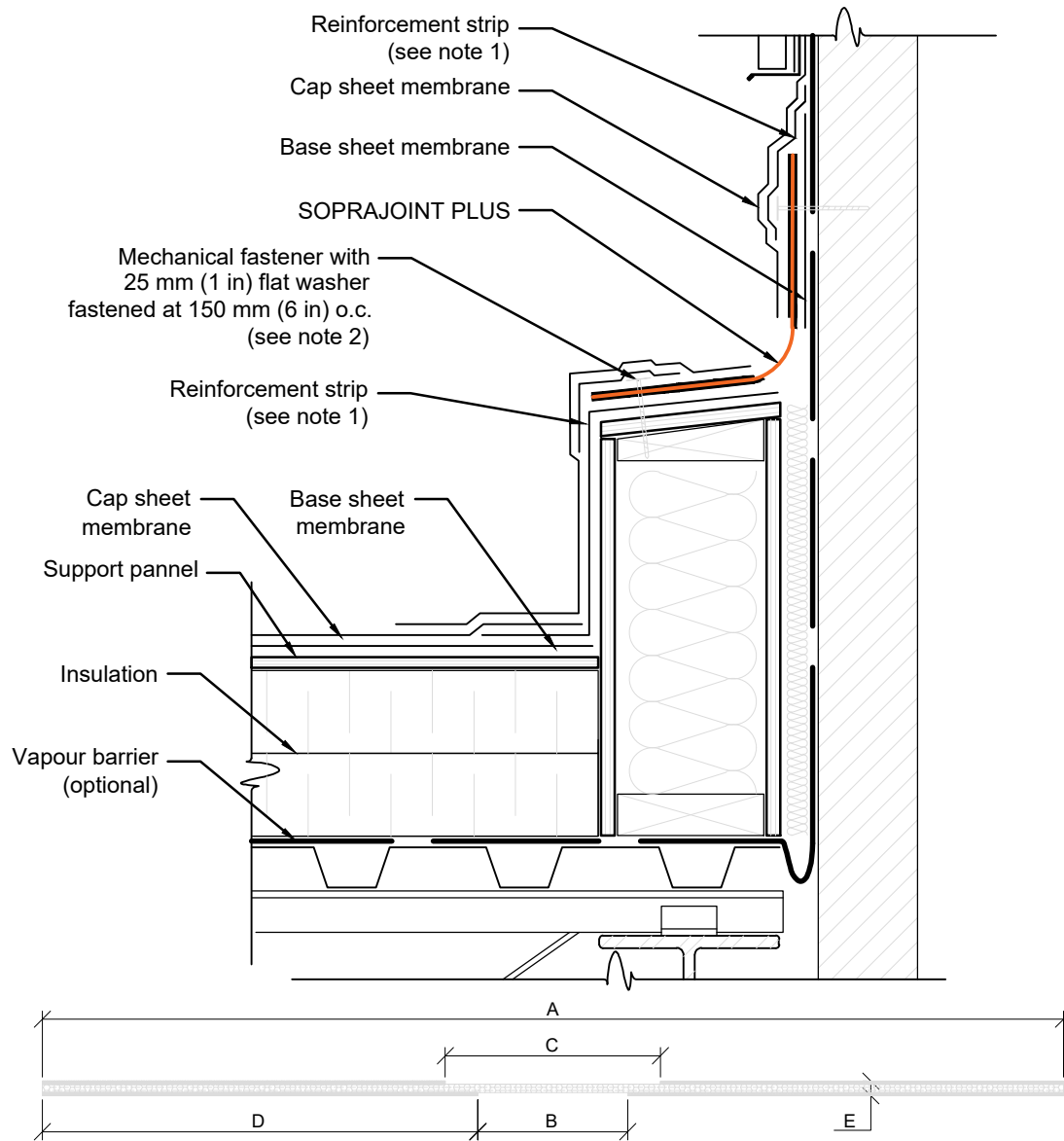


Dimensions for SOPRAJOINT PLUS expansion joints						
Name	A	B	C	D	E	
Soprajoint PLUS 20	355 mm (14.0 in)	35 mm (1.4 in)	55 mm (2.2 in)	160 mm (6.3 in)	2.5 mm (3/32 in)	
Soprajoint PLUS 40	390 mm (15.4 in)	70 mm (2.8 in)	90 mm (3.5 in)	160 mm (6.3 in)	2.5 mm (3/32 in)	
Soprajoint PLUS 75	435 mm (17.1 in)	115 mm (4.5 in)	135 mm (5.3 in)	160 mm (6.3 in)	2.5 mm (3/32 in)	
Soprajoint PLUS 100	500 mm (19.7 in)	180 mm (7.0 in)	200 mm (7.9 in)	160 mm (6.3 in)	2.5 mm (3/32 in)	
Soprajoint PLUS 125	560 mm (22.0 in)	240 mm (9.4 in)	260 mm (10.2 in)	160 mm (6.3 in)	2.5 mm (3/32 in)	

Note 1: Minimum 150 mm (6 in) reinforcement strip centered on the edge of the flange.
 Note 2: Only required for SOPRAJOINT PLUS 75, 100 and 125
 Note 3: The use of a flame-stop membrane is required when the expansion joint is heat-welded.

 <p>US CORPORATE ADDRESS 310 QUADRAL DRIVE WADSWORTH, OHIO 44281 www.soprema.us Tel: 330.334.0066</p>	PROJECT:	DRAWN BY: SOPREMA TECHNICAL SUPPORT		
	TITLE:	NO.:	REVISION:	DATE:
	SOPRAJOINT PLUS ROOF-WALL	DATE: 04.26.2024	DRAWING NUMBER: SJP 104-4	
		SCALE: NTS		


USAGE OF THIS DETAIL IS GOVERNED BY THE TERMS OF SERVICE FOR SOPREMA DETAILS.
 PLEASE CONSULT THESE TERMS OF SERVICE PRIOR TO UTILIZING THIS DRAWING.

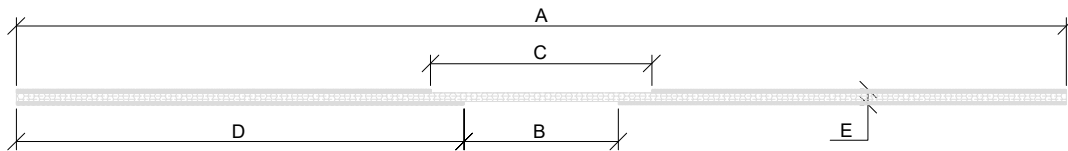
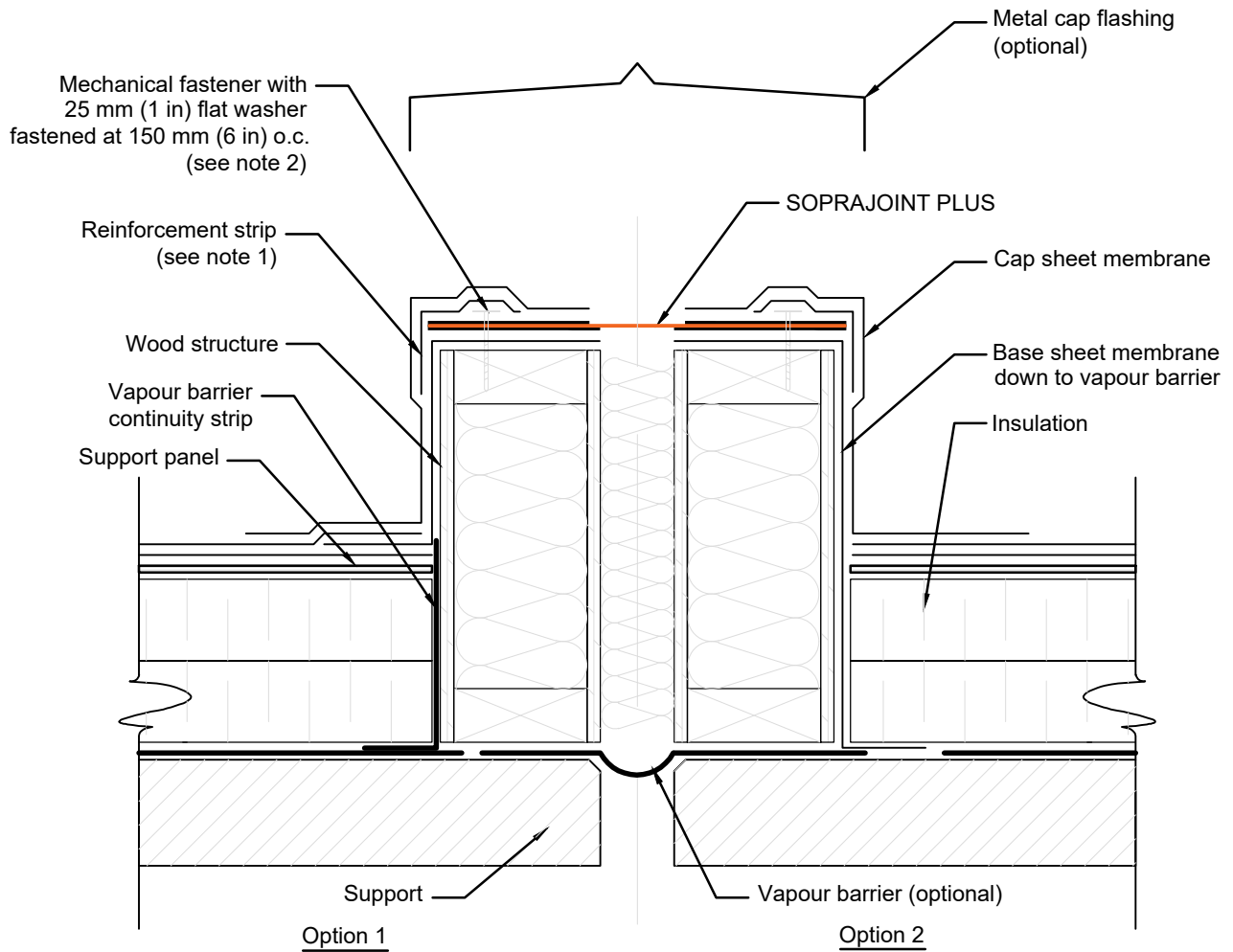


Dimensions for SOPRAJOINT PLUS expansion joints

Name	A	B	C	D	E
Soprajoint PLUS 20	355 mm (14.0 in)	35 mm (1.4 in)	55 mm (2.2 in)	160 mm (6.3 in)	2.5 mm (3/32 in)
Soprajoint PLUS 40	390 mm (15.4 in)	70 mm (2.8 in)	90 mm (3.5 in)	160 mm (6.3 in)	2.5 mm (3/32 in)
Soprajoint PLUS 75	435 mm (17.1 in)	115 mm (4.5 in)	135 mm (5.3 in)	160 mm (6.3 in)	2.5 mm (3/32 in)
Soprajoint PLUS 100	500 mm (19.7 in)	180 mm (7.0 in)	200 mm (7.9 in)	160 mm (6.3 in)	2.5 mm (3/32 in)
Soprajoint PLUS 125	560 mm (22.0 in)	240 mm (9.4 in)	260 mm (10.2 in)	160 mm (6.3 in)	2.5 mm (3/32 in)


Note 1: Minimum 150 mm (6 in) reinforcement strip centered on the edge of the flange.
 Note 2: Only required for SOPRAJOINT PLUS 75, 100 and 125
 Note 3: The use of a flame-stop membrane is required when the expansion joint is heat-welded.

 US CORPORATE ADDRESS 310 QUADRAL DRIVE WADSWORTH, OHIO 44281 www.soprema.us Tel: 330.334.0066	PROJECT:	DRAWN BY: SOPREMA TECHNICAL SUPPORT			
	TITLE: SOPRAJOINT PLUS ROOF-WALL 2.0	NO.:	REVISION:	DATE:	
		DATE: 04.26.2024	DRAWING NUMBER: SJP 104-2		
		SCALE: NTS			

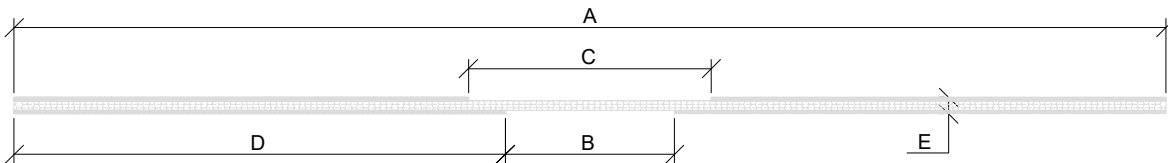
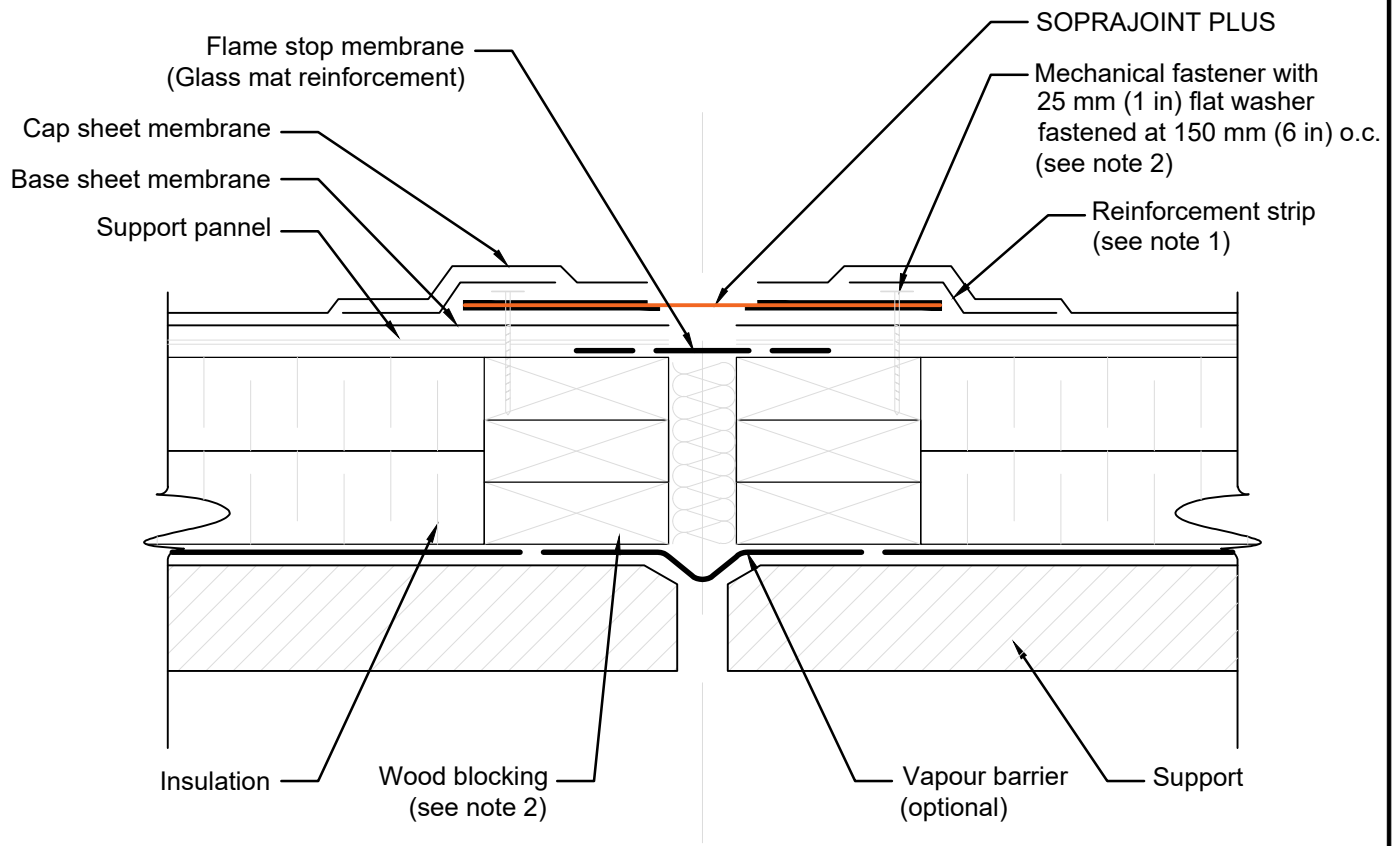


Dimensions for SOPRAJOINT PLUS expansion joints						
Name	A	B	C	D	E	
Soprajoint PLUS 20	355 mm (14.0 in)	35 mm (1.4 in)	55 mm (2.2 in)	160 mm (6.3 in)	2.5 mm (3/32 in)	
Soprajoint PLUS 40	390 mm (15.4 in)	70 mm (2.8 in)	90 mm (3.5 in)	160 mm (6.3 in)	2.5 mm (3/32 in)	
Soprajoint PLUS 75	435 mm (17.1 in)	115 mm (4.5 in)	135 mm (5.3 in)	160 mm (6.3 in)	2.5 mm (3/32 in)	
Soprajoint PLUS 100	500 mm (19.7 in)	180 mm (7.0 in)	200 mm (7.9 in)	160 mm (6.3 in)	2.5 mm (3/32 in)	
Soprajoint PLUS 125	560 mm (22.0 in)	240 mm (9.4 in)	260 mm (10.2 in)	160 mm (6.3 in)	2.5 mm (3/32 in)	

Note 1: Minimum 150 mm (6 in) reinforcement strip centered on the edge of the flange.
 Note 2: Only required for SOPRAJOINT PLUS 75, 100 and 125
 Note 3: The use of a flame-stop membrane is required when the expansion joint is heat-welded.

 <p>US CORPORATE ADDRESS 310 QUADRAL DRIVE WADSWORTH, OHIO 44281 www.soprema.us Tel: 330.334.0066</p>	PROJECT:	DRAWN BY: SOPREMA TECHNICAL SUPPORT		
	TITLE:	NO.:	REVISION:	DATE:
	SOPRAJOINT PLUS AREA-DIVIDER	DATE: 04.26.2024	DRAWING NUMBER: SJP 104-3	
		SCALE: NTS		

USAGE OF THIS DETAIL IS GOVERNED BY THE TERMS OF SERVICE FOR SOPREMA DETAILS.
 PLEASE CONSULT THESE TERMS OF SERVICE PRIOR TO UTILIZING THIS DRAWING.



Dimensions for SOPRAJOINT PLUS expansion joints						
Name	A	B	C	D	E	
Soprajoint PLUS 20	355 mm (14.0 in)	35 mm (1.4 in)	55 mm (2.2 in)	160 mm (6.3 in)	2.5 mm (3/32 in)	
Soprajoint PLUS 40	390 mm (15.4 in)	70 mm (2.8 in)	90 mm (3.5 in)	160 mm (6.3 in)	2.5 mm (3/32 in)	
Soprajoint PLUS 75	435 mm (17.1 in)	115 mm (4.5 in)	135 mm (5.3 in)	160 mm (6.3 in)	2.5 mm (3/32 in)	
Soprajoint PLUS 100	500 mm (19.7 in)	180 mm (7.0 in)	200 mm (7.9 in)	160 mm (6.3 in)	2.5 mm (3/32 in)	
Soprajoint PLUS 125	560 mm (22.0 in)	240 mm (9.4 in)	260 mm (10.2 in)	160 mm (6.3 in)	2.5 mm (3/32 in)	

Note 1: Minimum 150 mm (6 in) reinforcement strip centered on the edge of the flange
 Note 2: Only required for SOPRAJOINT PLUS 75, 100 and 125



US CORPORATE ADDRESS
 310 QUADRAL DRIVE
 WADSWORTH, OHIO 44281
www.soprema.us
 Tel: 330.334.0066

PROJECT:

TITLE:

**SOPRAJOINT PLUS
 HEAT-WELDED**

DRAWN BY: SOPREMA TECHNICAL SUPPORT

NO.:

REVISION:

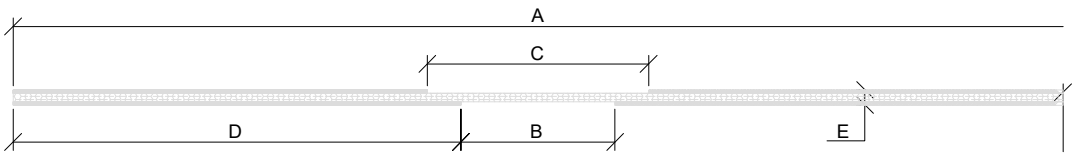
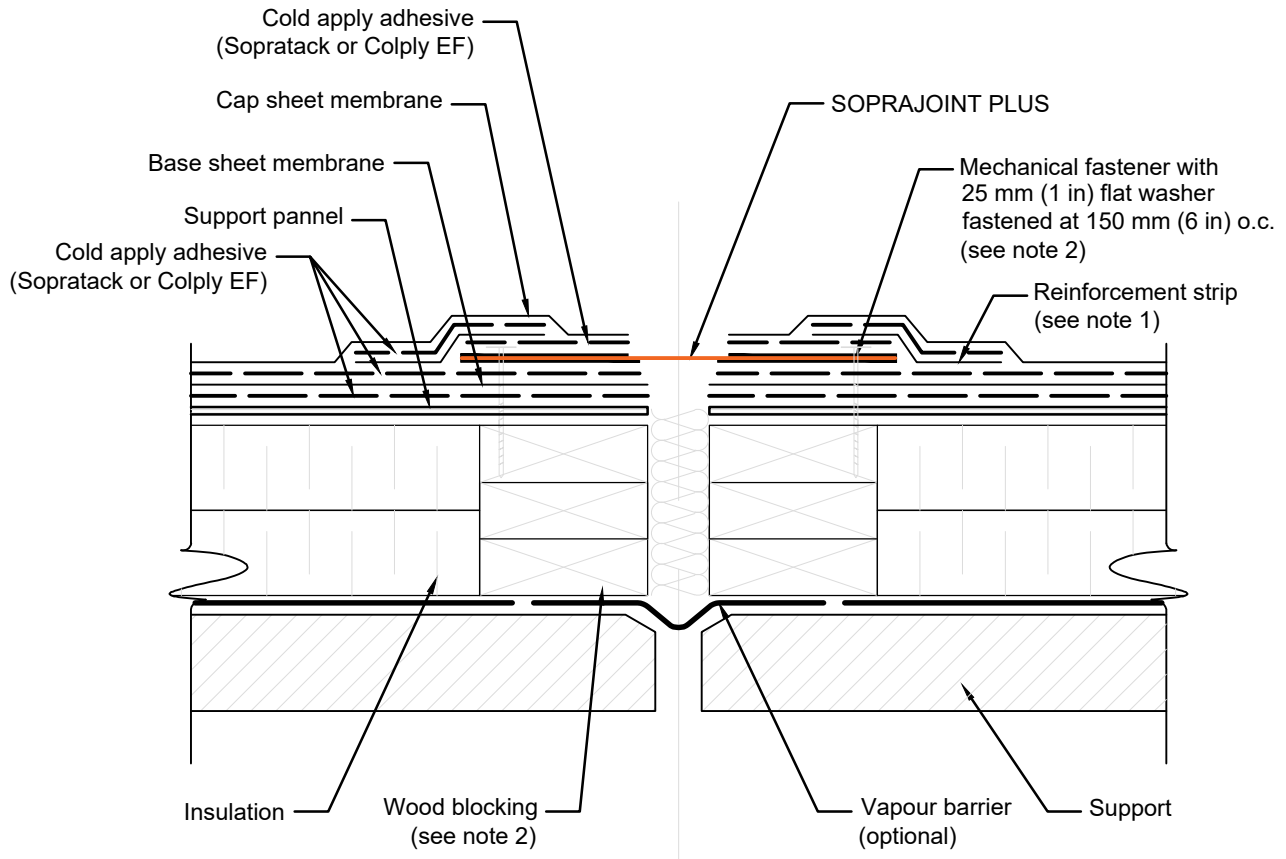
DATE:

DATE: 04.26.2024

SCALE: NTS


DRAWING NUMBER:
SJP 104-4

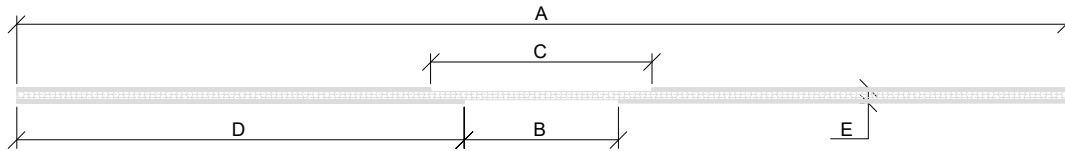
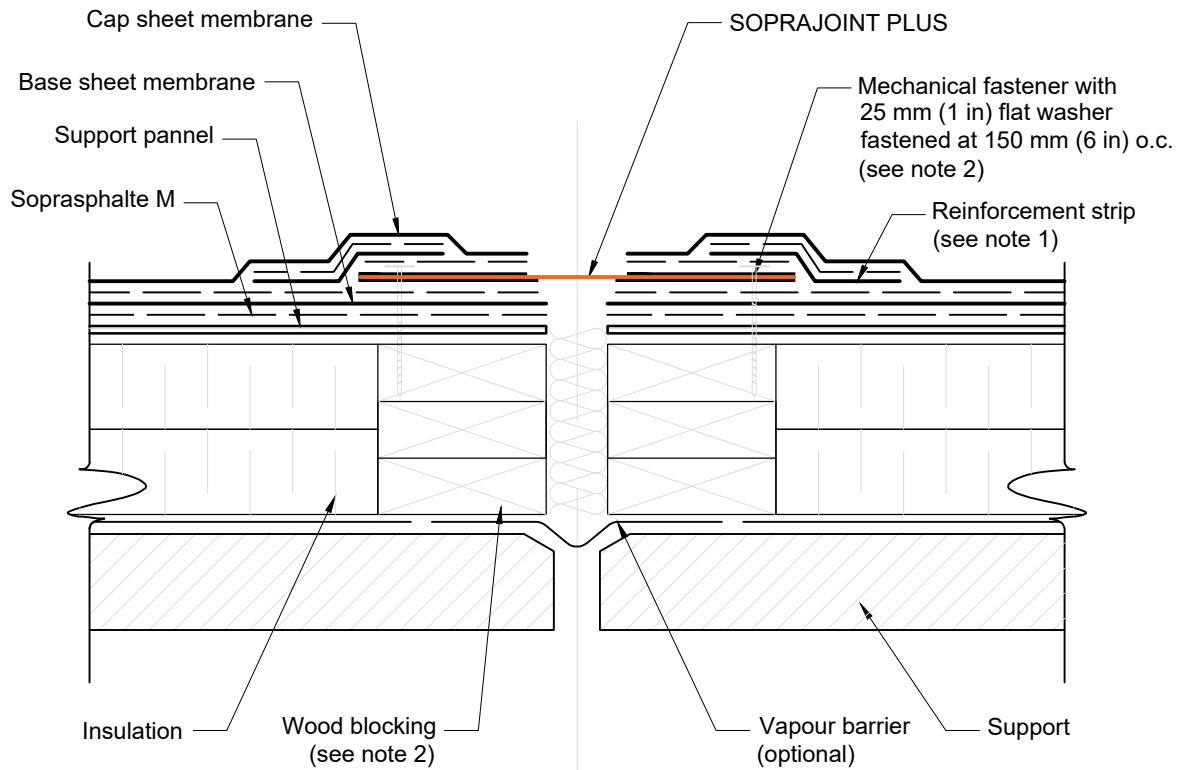
USAGE OF THIS DETAIL IS GOVERNED BY THE TERMS OF SERVICE FOR SOPREMA DETAILS.
 PLEASE CONSULT THESE TERMS OF SERVICE PRIOR TO UTILIZING THIS DRAWING.



Dimensions for SOPRAJOINT PLUS expansion joints						
Name		A	B	C	D	E
Soprajoint PLUS 20		355 mm (14.0 in)	35 mm (1.4 in)	55 mm (2.2 in)	160 mm (6.3 in)	2.5 mm (3/32 in)
Soprajoint PLUS 40		390 mm (15.4 in)	70 mm (2.8 in)	90 mm (3.5 in)	160 mm (6.3 in)	2.5 mm (3/32 in)
Soprajoint PLUS 75		435 mm (17.1 in)	115 mm (4.5 in)	135 mm (5.3 in)	160 mm (6.3 in)	2.5 mm (3/32 in)
Soprajoint PLUS 100		500 mm (19.7 in)	180 mm (7.0 in)	200 mm (7.9 in)	160 mm (6.3 in)	2.5 mm (3/32 in)
Soprajoint PLUS 125		560 mm (22.0 in)	240 mm (9.4 in)	260 mm (10.2 in)	160 mm (6.3 in)	2.5 mm (3/32 in)

Note 1: Minimum 150 mm (6 in) reinforcement strip centered on the edge of the flange
 Note 2: Only required for SOPRAJOINT PLUS 75, 100 and 125

 <p>US CORPORATE ADDRESS 310 QUADRAL DRIVE WADSWORTH, OHIO 44281 www.soprema.us Tel: 330.334.0066</p>	PROJECT:	DRAWN BY: SOPREMA TECHNICAL SUPPORT		
	TITLE:	NO.:	REVISION:	DATE:
	SOPRAJOINT PLUS COLD-ADHESIVE	DATE: 04.26.2024	DRAWING NUMBER: SJP 104-5	
		SCALE: NTS		



Dimensions for SOPRAJOINT PLUS expansion joints						
Name	A	B	C	D	E	
Soprajoint PLUS 20	355 mm (14.0 in)	35 mm (1.4 in)	55 mm (2.2 in)	160 mm (6.3 in)	2.5 mm (3/32 in)	
Soprajoint PLUS 40	390 mm (15.4 in)	70 mm (2.8 in)	90 mm (3.5 in)	160 mm (6.3 in)	2.5 mm (3/32 in)	
Soprajoint PLUS 75	435 mm (17.1 in)	115 mm (4.5 in)	135 mm (5.3 in)	160 mm (6.3 in)	2.5 mm (3/32 in)	
Soprajoint PLUS 100	500 mm (19.7 in)	180 mm (7.0 in)	200 mm (7.9 in)	160 mm (6.3 in)	2.5 mm (3/32 in)	
Soprajoint PLUS 125	560 mm (22.0 in)	240 mm (9.4 in)	260 mm (10.2 in)	160 mm (6.3 in)	2.5 mm (3/32 in)	

Note 1: Minimum 150 mm (6 in) reinforcement strip centered on the edge of the flange

Note 2: Only required for SOPRAJOINT PLUS 75, 100 and 125



US CORPORATE ADDRESS
310 QUADRAL DRIVE
WADSWORTH, OHIO 44281
www.soprema.us
Tel: 330.334.0066

PROJECT:

TITLE:

SOPRAJOINT PLUS
HOT-BITUMEN

DRAWN BY: SOPREMA TECHNICAL SUPPORT

NO.:

REVISION:

DATE:

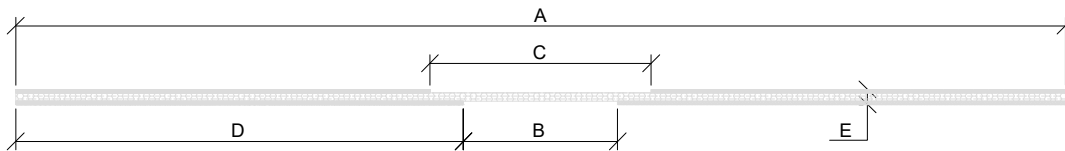
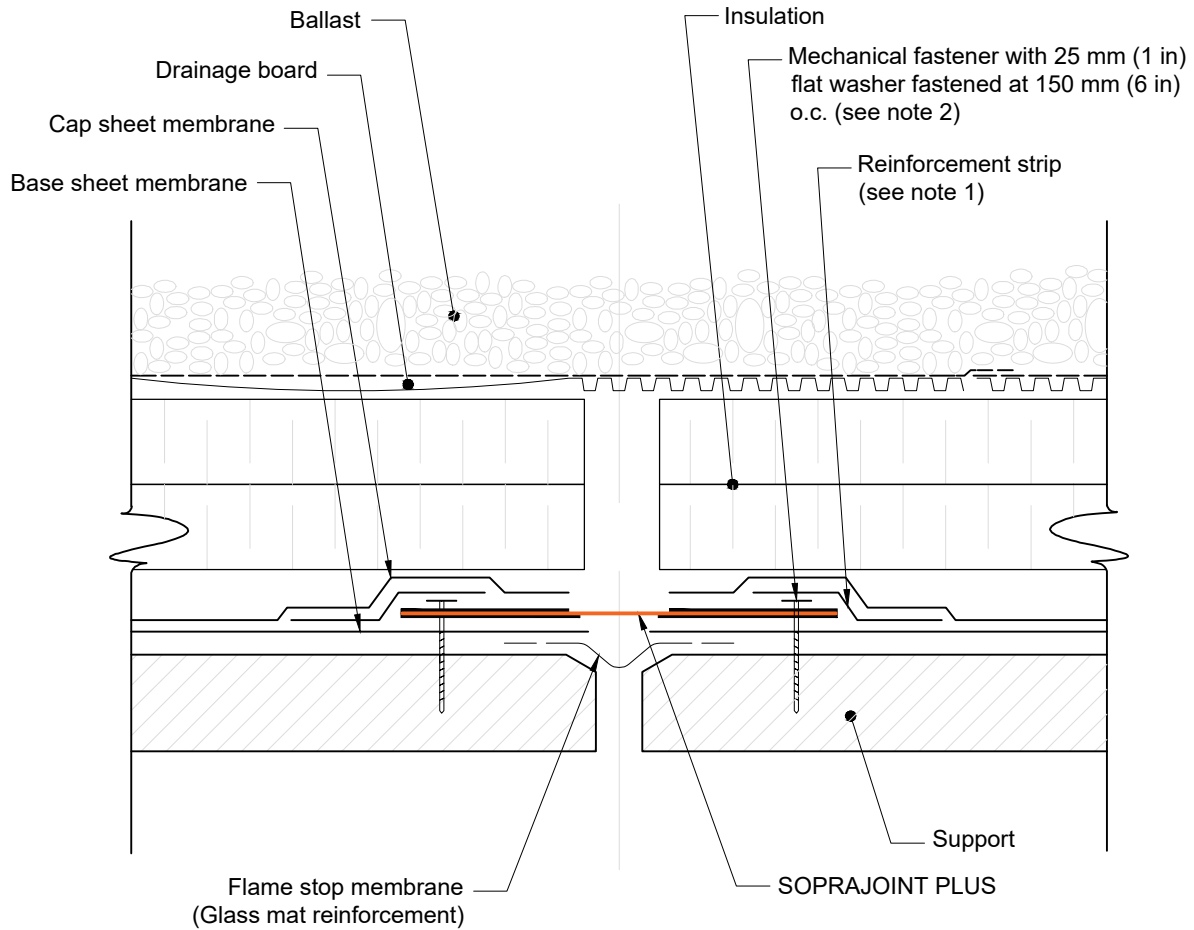
DATE: 04.26.2024

SCALE: NTS

DRAWING NUMBER:


SJP 104-9

USAGE OF THIS DETAIL IS GOVERNED BY THE TERMS OF SERVICE FOR SOPREMA DETAILS.
PLEASE CONSULT THESE TERMS OF SERVICE PRIOR TO UTILIZING THIS DRAWING.

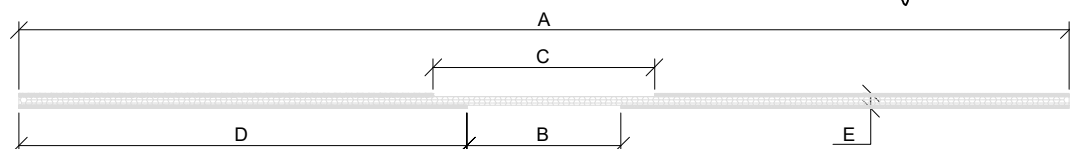
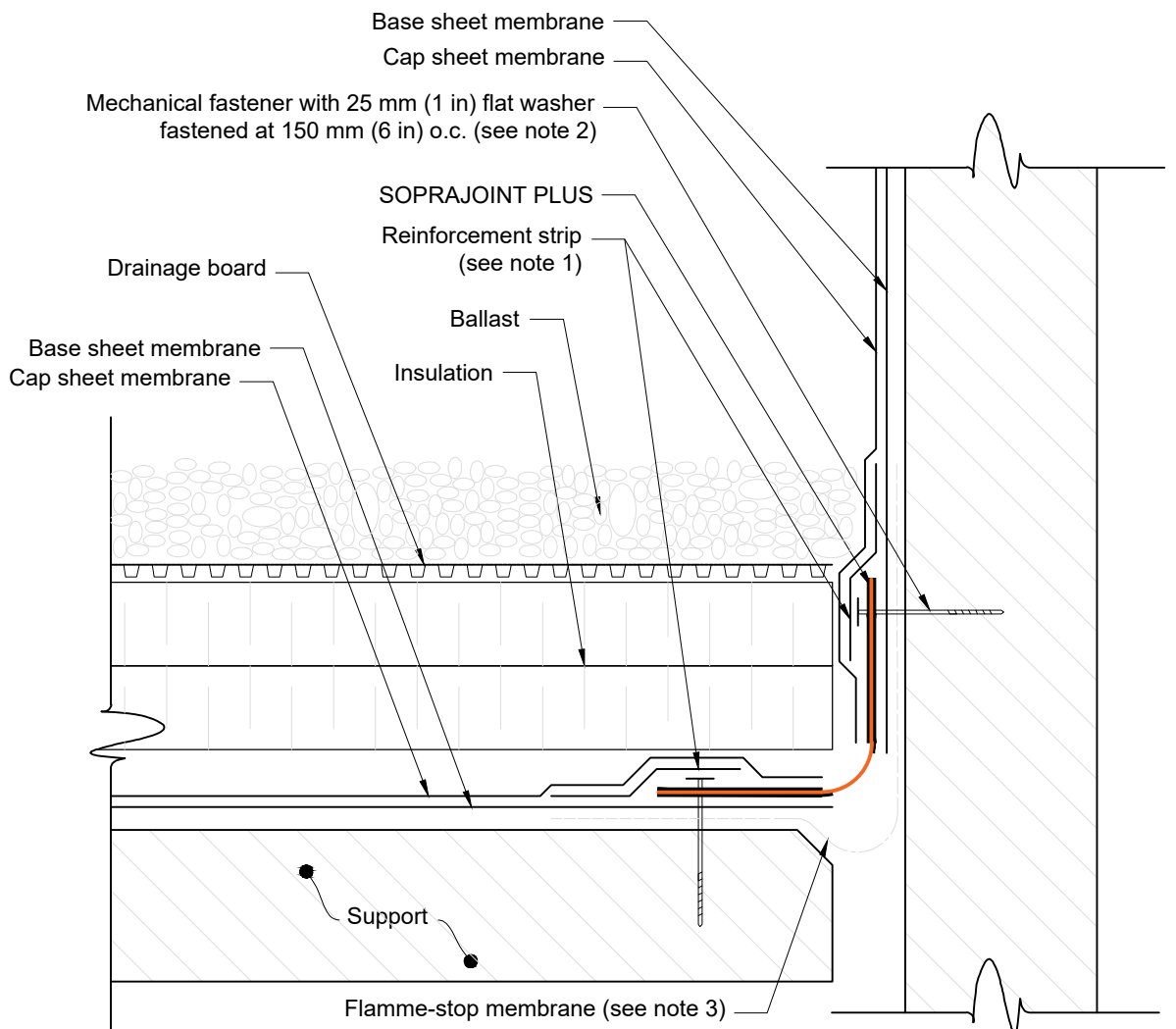


Dimensions for SOPRAJOINT PLUS expansion joints						
Name		A	B	C	D	E
Soprajoint PLUS 20		355 mm (14.0 in)	35 mm (1.4 in)	55 mm (2.2 in)	160 mm (6.3 in)	2.5 mm (3/32 in)
Soprajoint PLUS 40		390 mm (15.4 in)	70 mm (2.8 in)	90 mm (3.5 in)	160 mm (6.3 in)	2.5 mm (3/32 in)
Soprajoint PLUS 75		435 mm (17.1 in)	115 mm (4.5 in)	135 mm (5.3 in)	160 mm (6.3 in)	2.5 mm (3/32 in)
Soprajoint PLUS 100		500 mm (19.7 in)	180 mm (7.0 in)	200 mm (7.9 in)	160 mm (6.3 in)	2.5 mm (3/32 in)
Soprajoint PLUS 125		560 mm (22.0 in)	240 mm (9.4 in)	260 mm (10.2 in)	160 mm (6.3 in)	2.5 mm (3/32 in)

Note 1: Minimum 150 mm (6 in) reinforcement strip centered on the edge of the flange
 Note 2: Only required for SOPRAJOINT PLUS 75, 100 and 125


 <p>US CORPORATE ADDRESS 310 QUADRAL DRIVE WADSWORTH, OHIO 44281 www.soprema.us Tel: 330.334.0066</p>	PROJECT:	DRAWN BY: SOPREMA TECHNICAL SUPPORT		
	TITLE:	NO.:	REVISION:	DATE:
	SOPRAJOINT PLUS HEAT-WELDED	DATE: 04.26.2024	DRAWING NUMBER: SJP 114-1	
		SCALE: NTS		

USAGE OF THIS DETAIL IS GOVERNED BY THE TERMS OF SERVICE FOR SOPREMA DETAILS.
 PLEASE CONSULT THESE TERMS OF SERVICE PRIOR TO UTILIZING THIS DRAWING.

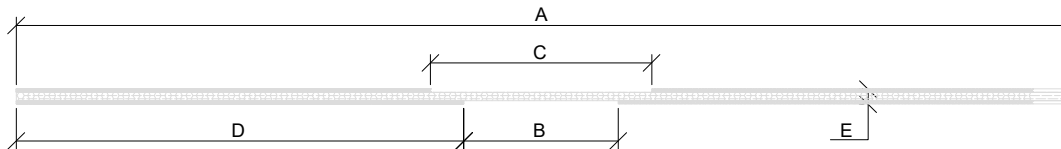
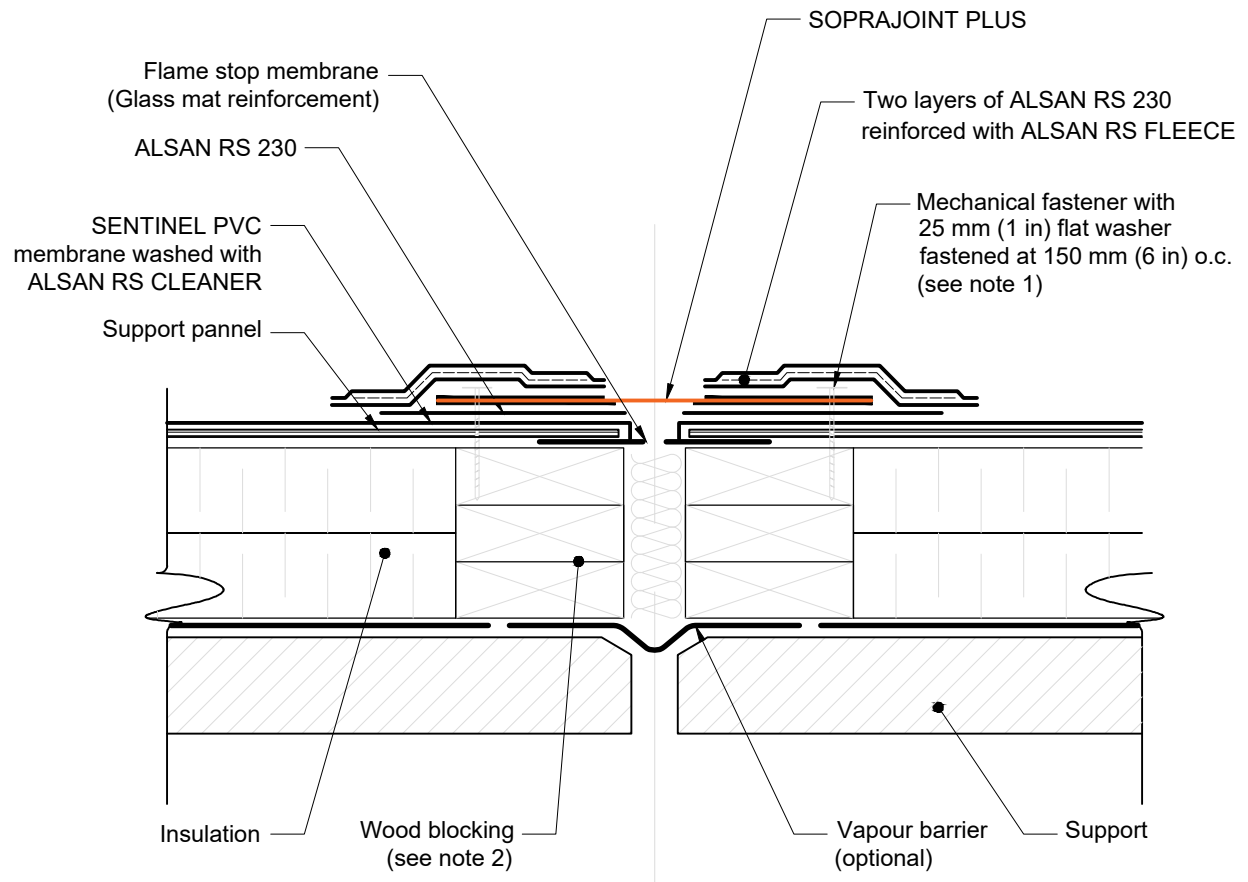


Dimensions for SOPRAJOINT PLUS expansion joints						
Name		A	B	C	D	E
Soprajoint PLUS 20		355 mm (14.0 in)	35 mm (1.4 in)	55 mm (2.2 in)	160 mm (6.3 in)	2.5 mm (3/32 in)
Soprajoint PLUS 40		390 mm (15.4 in)	70 mm (2.8 in)	90 mm (3.5 in)	160 mm (6.3 in)	2.5 mm (3/32 in)
Soprajoint PLUS 75		435 mm (17.1 in)	115 mm (4.5 in)	135 mm (5.3 in)	160 mm (6.3 in)	2.5 mm (3/32 in)
Soprajoint PLUS 100		500 mm (19.7 in)	180 mm (7.0 in)	200 mm (7.9 in)	160 mm (6.3 in)	2.5 mm (3/32 in)
Soprajoint PLUS 125		560 mm (22.0 in)	240 mm (9.4 in)	260 mm (10.2 in)	160 mm (6.3 in)	2.5 mm (3/32 in)

Note 1: Minimum 150 mm (6 in) reinforcement strip centered on the edge of the flange.
 Note 2: Only required for SOPRAJOINT PLUS 75, 100 and 125
 Note 3: The use of a flange-stop membrane is required when the expansion joint is heat-welded.


 <p>US CORPORATE ADDRESS 310 QUADRAL DRIVE WADSWORTH, OHIO 44281 www.soprema.us Tel: 330.334.0066</p>	PROJECT:	DRAWN BY: SOPREMA TECHNICAL SUPPORT		
	TITLE:	NO.:	REVISION:	DATE:
	SOPRAJOINT PLUS ROOF-WALL	DATE: 04.26.2024	DRAWING NUMBER: SJP 114-9	
		SCALE: NTS		

USAGE OF THIS DETAIL IS GOVERNED BY THE TERMS OF SERVICE FOR SOPREMA DETAILS.
 PLEASE CONSULT THESE TERMS OF SERVICE PRIOR TO UTILIZING THIS DRAWING.

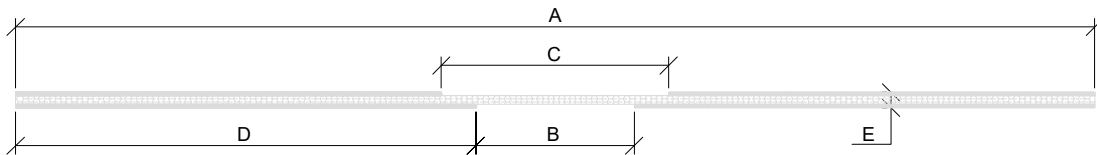
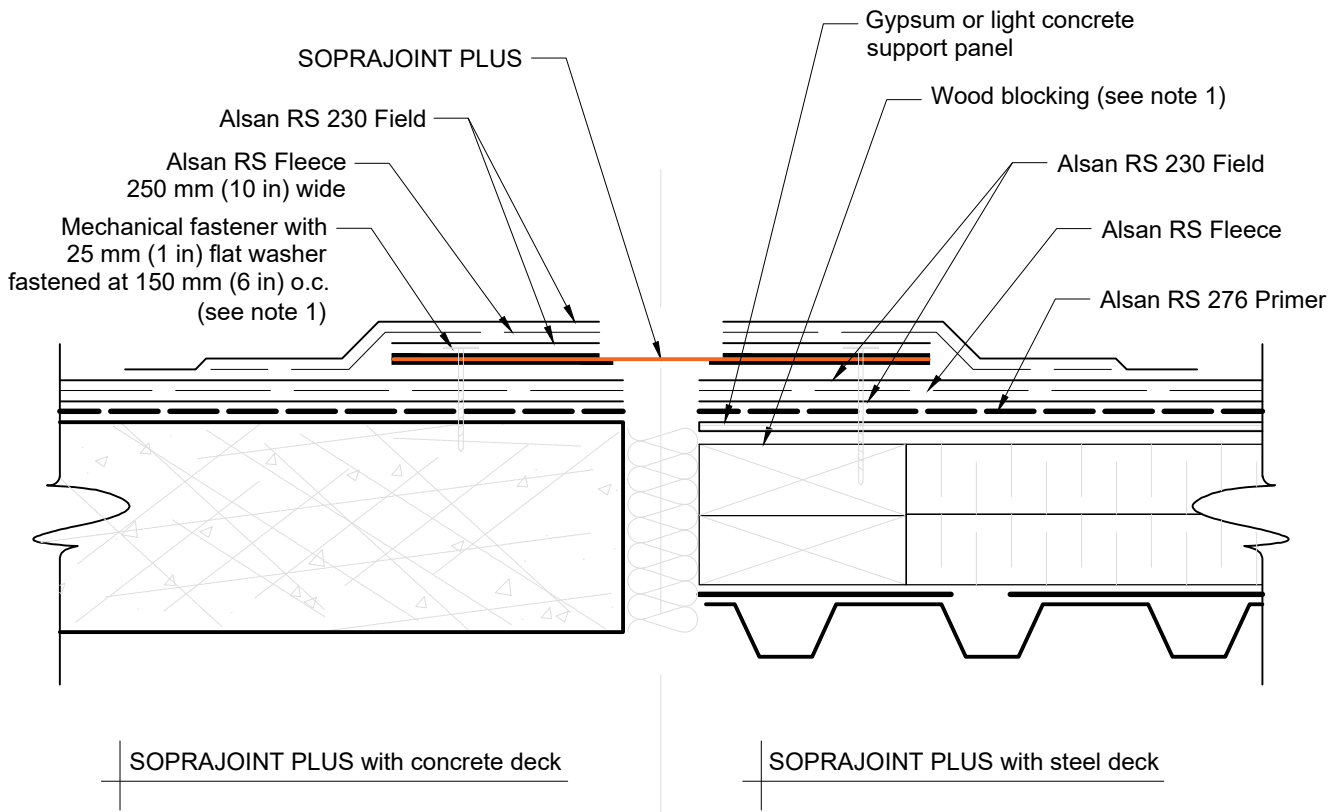


Dimensions for SOPRAJOINT PLUS expansion joints					
Name	A	B	C	D	E
Soprajoint PLUS 20	355 mm (14.0 in)	35 mm (1.4 in)	55 mm (2.2 in)	160 mm (6.3 in)	2.5 mm (3/32 in)
Soprajoint PLUS 40	390 mm (15.4 in)	70 mm (2.8 in)	90 mm (3.5 in)	160 mm (6.3 in)	2.5 mm (3/32 in)
Soprajoint PLUS 75	435 mm (17.1 in)	115 mm (4.5 in)	135 mm (5.3 in)	160 mm (6.3 in)	2.5 mm (3/32 in)
Soprajoint PLUS 100	500 mm (19.7 in)	180 mm (7.0 in)	200 mm (7.9 in)	160 mm (6.3 in)	2.5 mm (3/32 in)
Soprajoint PLUS 125	560 mm (22.0 in)	240 mm (9.4 in)	260 mm (10.2 in)	160 mm (6.3 in)	2.5 mm (3/32 in)

Note 1: Only required for SOPRAJOINT PLUS 75, 100 and 125


 <p>US CORPORATE ADDRESS 310 QUADRAL DRIVE WADSWORTH, OHIO 44281 www.soprema.us Tel: 330.334.0066</p>	PROJECT:	DRAWN BY: SOPREMA TECHNICAL SUPPORT		
	TITLE:	NO.:	REVISION:	DATE:
	SOPRAJOINT PLUS SENTINEL-PVC-MEMBRANE	DATE: 04.26.2024	DRAWING NUMBER: SJP 144-1	
		SCALE: NTS		

USAGE OF THIS DETAIL IS GOVERNED BY THE TERMS OF SERVICE FOR SOPREMA DETAILS. PLEASE CONSULT THESE TERMS OF SERVICE PRIOR TO UTILIZING THIS DRAWING.

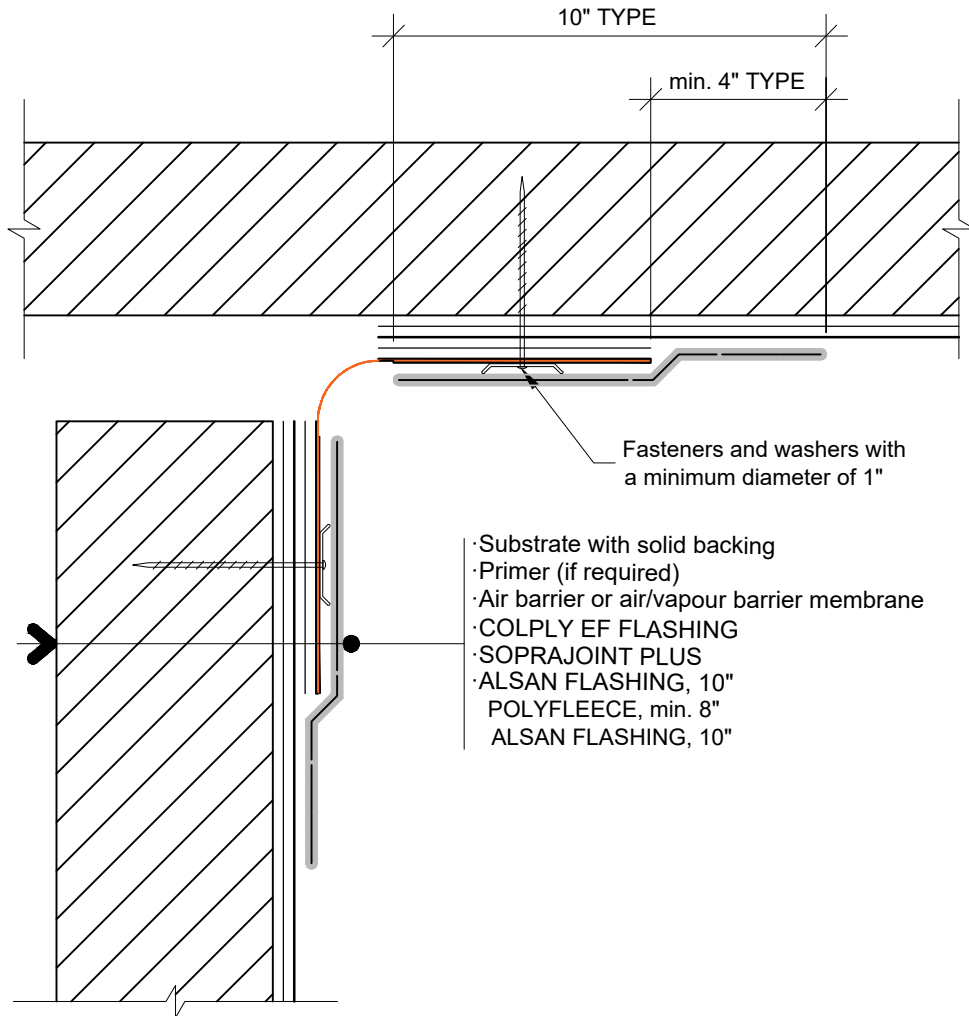


Dimensions for SOPRAJOINT PLUS expansion joints						
Name	A	B	C	D	E	
Soprajoint PLUS 20	355 mm (14.0 in)	35 mm (1.4 in)	55 mm (2.2 in)	160 mm (6.3 in)	2.5 mm (3/32 in)	
Soprajoint PLUS 40	390 mm (15.4 in)	70 mm (2.8 in)	90 mm (3.5 in)	160 mm (6.3 in)	2.5 mm (3/32 in)	
Soprajoint PLUS 75	435 mm (17.1 in)	115 mm (4.5 in)	135 mm (5.3 in)	160 mm (6.3 in)	2.5 mm (3/32 in)	
Soprajoint PLUS 100	500 mm (19.7 in)	180 mm (7.0 in)	200 mm (7.9 in)	160 mm (6.3 in)	2.5 mm (3/32 in)	
Soprajoint PLUS 125	560 mm (22.0 in)	240 mm (9.4 in)	260 mm (10.2 in)	160 mm (6.3 in)	2.5 mm (3/32 in)	

Note 1
Only required for SOPRAJOINT PLUS 75, 100 and 125.

 <p>US CORPORATE ADDRESS 310 QUADRAL DRIVE WADSWORTH, OHIO 44281 www.soprema.us Tel: 330.334.0066</p>	PROJECT:	DRAWN BY: SOPREMA TECHNICAL SUPPORT		
	TITLE:	NO.:	REVISION:	DATE:
	SOPRAJOINT PLUS ALSAN-RS	DATE: 04.26.2024	DRAWING NUMBER: SJP 154-1	
		SCALE: NTS		

USAGE OF THIS DETAIL IS GOVERNED BY THE TERMS OF SERVICE FOR SOPREMA DETAILS.
PLEASE CONSULT THESE TERMS OF SERVICE PRIOR TO UTILIZING THIS DRAWING.



- Substrate with solid backing
- Primer (if required)
- Air barrier or air/vapour barrier membrane
- COLPLY EF FLASHING
- SOPRAJOINT PLUS
- ALSAN FLASHING, 10"
- POLYFLEECE, min. 8"
- ALSAN FLASHING, 10"



US CORPORATE ADDRESS
 310 QUADRAL DRIVE
 WADSWORTH, OHIO 44281
www.soprema.us
 Tel: 330.334.0066

PROJECT:

TITLE:

SOPRAJOINT PLUS
 ALSAN-RS-CORNER-FLASHING

DRAWN BY: SOPREMA TECHNICAL SUPPORT

NO.:

REVISION:

DATE:

DATE: 04.26.2024

SCALE: NTS

DRAWING NUMBER:
SJP 320-03

USAGE OF THIS DETAIL IS GOVERNED BY THE TERMS OF SERVICE FOR SOPREMA DETAILS.
 PLEASE CONSULT THESE TERMS OF SERVICE PRIOR TO UTILIZING THIS DRAWING.