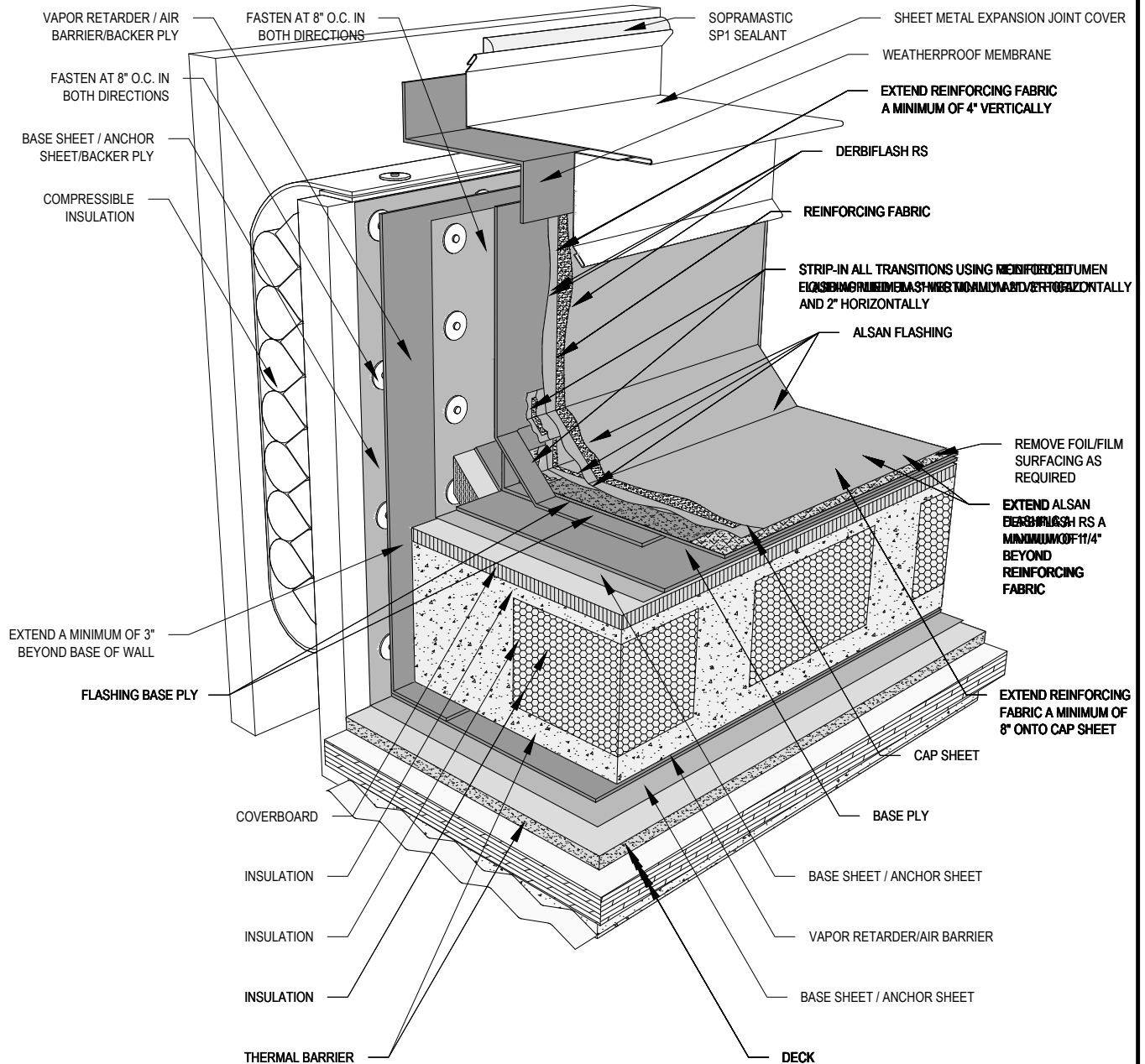


DRAWING MUST BE VIEWED IN ADOBE ACROBAT TO ENABLE CUSTOM LAYERING



NOTES:

1. PERFORMANCE ROOF SYSTEMS DETAIL DRAWINGS: REFER TO PERFORMANCE ROOF SYSTEMS AND OTHER RELATED PUBLISHED DOCUMENTATION, PRODUCT DATA SHEETS (PDS) AND SAFETY DATA SHEETS (SDS) FOR ADDITIONAL INFORMATION. ALL DETAIL DRAWINGS AND RELATED INSTALLATION GUIDELINES ARE PROVIDED BY PERFORMANCE ROOF SYSTEMS FOR THE SOLE PURPOSE OF ISSUING A PERFORMANCE ROOF SYSTEMS WARRANTY. ACCORDINGLY, THE DETAIL DRAWINGS ARE NOT OFFERED, AND SHOULD NOT BE CONSIDERED, AS A SUBSTITUTE FOR PROFESSIONAL DESIGN SERVICES.
2. HOT WORK: THE CONTRACTOR IS RESPONSIBLE FOR DETERMINING APPROPRIATE CONDITIONS TO UTILIZE HEAT-WELDING EQUIPMENT. REFER TO THE NRCA CERTA RECOMMENDATIONS, LOCAL CODES AND BUILDING OWNER'S REQUIREMENTS FOR HOT WORK OPERATIONS.
3. PRIMER: WHERE NOT SHOWN OR INDICATED IN DETAIL DRAWINGS, REFER TO MATERIAL PRODUCT DATA SHEETS FOR PRIMER APPLICATION REQUIREMENTS.
4. PERFORMANCE ROOF SYSTEMS RECOMMENDS 8 INCH VERTICAL FLASHING HEIGHTS. FLASHING DETAILS SHOWN INCLUDE MINIMUM DIMENSIONS TO MEET WARRANTY REQUIREMENTS. CONTACT PERFORMANCE ROOF SYSTEMS FOR ADDITIONAL REQUIREMENTS.



4800 DR. MARTIN LUTHER KING JR. BLVD.
KANSAS CITY, MO 64130
www.performanceroofsystems.us
Tel: 816.921.0221

PROJECT:

TITLE:

2 PLY APP MEMBRANE,
INSULATED,
WALL EXPANSION JOINT WITH
LIQUID FLASHING

DRAWN BY: PRS TECHNICAL SUPPORT, GGALLOWAY

NO.:

REVISION:

DATE:

DATE: 07.26.2022

SCALE: NTS

DRAWING NUMBER:

US.PRS.RM2APP.08.05

USAGE OF THIS DETAIL IS GOVERNED BY THE TERMS OF SERVICE FOR PERFORMANCE ROOF SYSTEMS DETAILS.
PLEASE CONSULT THESE TERMS OF SERVICE PRIOR TO UTILIZING THIS DRAWING.