

DERBIFLASH RS PRE-CUT FLEECE

LARGE PIPE INSTALLATION INSTRUCTIONS

DESCRIPTION

Derbiflash RS Pre-Cut Fleece is a nonwoven, polyester reinforcement designed for use with Derbiflash RS liquid-applied systems. Convenient and ready to install, pre-cut fleece kits improve roof-top productivity while reducing product waste. Pre-Cut Fleece kits are available for small and large pipe penetrations and corner installations.

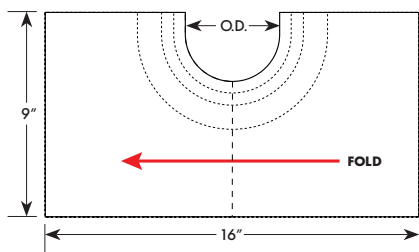
EACH KIT INCLUDES

The Large Pipe Pre-cut Fleece Kit is designed for use on pipe penetrations with a diameter between 4 to 8 inches. Each kit comes with three pre-cut pieces: 2 base targets (9 inches x 16 inches) and 1 pipe skirt (11 inches x 30 inches) with factory cut fingers.

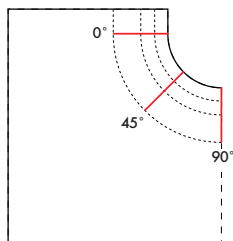
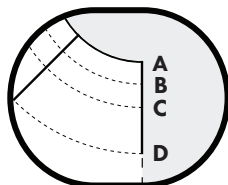
SIZING THE TARGET BASE

The pipe targets come sized to fit a 4 inch nominal pipe. For larger penetrations, the targets must be cut to fit the outside diameter. For your convenience, the fleece has cutting guides for standard pipe sizes, refer to the chart below for more information.

	NOMINAL PIPE SIZE	OUTSIDE DIAMETER <i>Inches</i>	APPROX. CUT <i>Inches</i>
A	4 inch	4.125	
B	5 inch	5.125	1/2
C	6 inch	6.125	1
D	8 inch	8.125	2



SEE CHART ABOVE



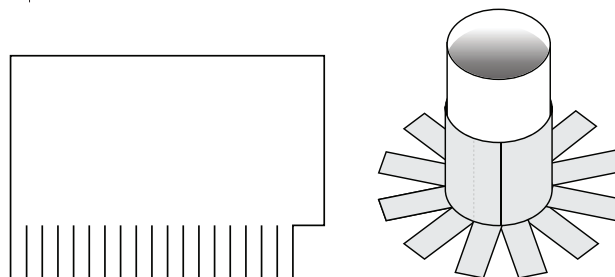
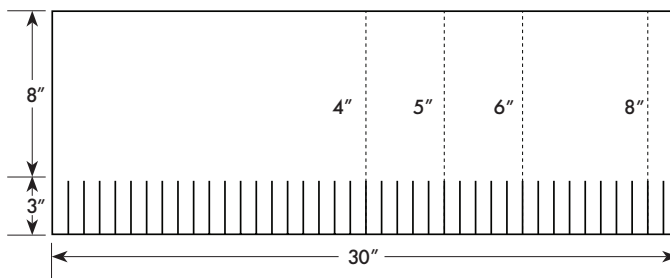
To size the pipe target, fold the piece in half. Make three small relief cuts at 90, 45 and 0 degrees. Additional relief cuts may be necessary to ensure the targets lay flat.

NOTE: For unknown or atypical pipe sizes, place the target around the pipe base, trace the outside diameter and cut accordingly.

SIZING THE PIPE SKIRT

The pipe skirt comes sized to fit an 8 inch nominal pipe. For smaller penetrations, the skirt must be cut down to fit the pipe circumference. Reference the table below for standard sized pipes:

NOMINAL PIPE SIZE <i>Inches</i>	OUTSIDE DIAMETER <i>Inches</i>	APPROX. SKIRT LENGTH <i>Inches</i>
4	4 1/8	14
5	5 1/8	17 1/8
6	6 1/8	20 1/4
8	8 1/8	26 1/2



Once the pipe skirt has been cut to length, remove two of the pre-cut fingers on one end to accommodate for overlap. The vertical overlap must be a minimum of 1 inch.

NOTE: For penetration sizes not mentioned or if the exact diameter is unknown, simply wrap the skirt around the pipe allowing for minimum 1 inch vertical overlap, mark the skirt and then cut accordingly.

For complete application instructions and product specifications contact Technical Services.

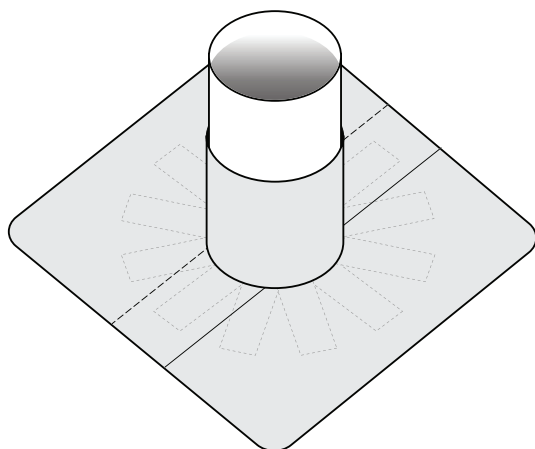
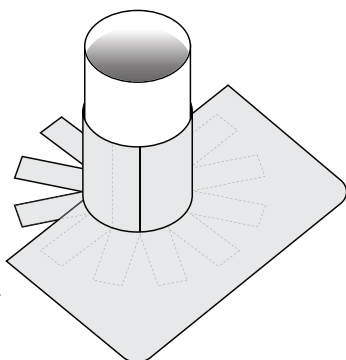
WWW.PERFORMANCEROOFSYSTEMS.US | 800-727-9872

DERBIFLASH RS PRE-CUT FLEECE

LARGE PIPE INSTALLATION INSTRUCTIONS

APPLICATION

1. Start with the vertical flashing. Apply a uniform layer of resin to the pipe and around the base of the penetration, where the pre-cut fingers meet the substrate.
2. Wrap the pipe skirt around the penetration while the resin is wet. Apply resin between the fleece overlap to avoid dry lap conditions.
3. Using a dry roller or brush, apply firm light pressure in a counter clockwise direction to embed the fleece. This will help eliminate any voids, ridges or air pockets.
4. Apply a second coat of resin at 20 mil thickness to fully encapsulate the fleece.
5. Once the skirt flashing is complete, apply a uniform layer of resin around the base of the penetration.
6. Immediately place the first target base into the wet resin. Using a dry roller or brush, apply firm light pressure, to embed the fleece.
7. Install the second target base, over-lapping the first piece by a minimum of 2 inches. Apply resin to the fleece overlaps.
8. Using a dry roller or brush, apply firm light pressure, to embed the fleece.
9. Generously apply a second coat of resin at 20 mil thickness to fully encapsulate the fleece.



IMPORTANT: Remove perimeter taping prior to membrane cure.

QUALITY ASSURANCE TIPS

- ▶ Adequate surface preparation is the key to proper adhesion with the substrate. All surfaces must be free of gross irregularities, loose, unsound or foreign material. Included, but not limited to, conditions are dirt, moisture, oil, grease, release agents, paints and coatings, lacquers, excess granules, roof cements, loose granules or any other substances.
- ▶ Tape all perimeters of the flashing detail a maximum of 1/4 inch beyond all fleece terminations. Taping provides a detailed, professional appearance and protects from over painting.
- ▶ Derbiflash RS resin should be mixed and applied in accordance with standard recommendations, procedures and guidelines. Refer to the Product Data Sheet (PDS) for the appropriate and application instructions.

STORAGE & HANDLING

When not in use, store fleece in original packaging and protected from contaminants. Exposure to moisture (rain, condensation, high humidity, etc.) dust, dirt and debris will compromise and may cause failure of the finished application. Contaminated fleece **MUST** be disposed of and replaced.

SAFETY PRECAUTIONS

Prior to starting work, read and follow all product labels, data sheets and published specifications for recommended application guidelines. Refer to product Safety Data Sheets (SDS) for health, safety and environment related hazards. The applicator is responsible for ensuring conditions are appropriate to proceed and proper application methods are followed.

DISCLAIMER

The applicator is responsible for ensuring conditions are appropriate to proceed with proper application methods. Refer to Performance Roof Systems product specifications and guides for additional information. Materials and methods should be adjusted as necessary to accommodate varying project conditions. Materials should not be installed when conditions are unacceptable to achieve the specified results.

For complete application instructions and product specifications contact Technical Services.
WWW.PERFORMANCEROOFSYSTEMS.US | 800-727-9872