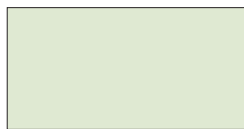


METAL EDGE SYSTEMS

COLOR SELECTION GUIDE

EXPRESS COLORS

Also available in a mill finish



ALMOND ★



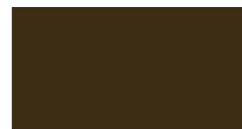
BONE WHITE ★



CITYSCAPE ★



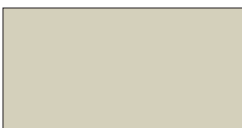
CLEAR ANODIZED



DARK BRONZE ★



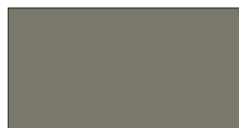
MEDIUM BRONZE ★



SANDSTONE ★



SIERRA TAN ★



SLATE GREY ★



STONE WHITE ★

STANDARD COLORS



CARDINAL RED ★



CHARCOAL ★



COLONIAL RED ★



EVERGREEN ★



FOREST GREEN



GRANITE ★



HARTFORD GREEN



HEMLOCK GREEN ★



HUNTER GREEN ★



INTERSTATE BLUE



MANSARD BROWN ★



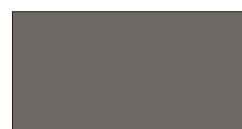
MATTE BLACK ●



GLOSSY BLACK ●



MIDNIGHT BRONZE



MUSKET GREY ★



PATINA GREEN ★ ●



SKY BLUE ★



SLATE BLUE ★



TERRA COTTA ★

PREMIUM COLORS



AGED COPPER ★



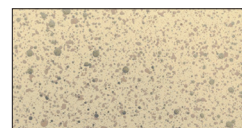
AWARD BLUE



CHAMPAGNE ★



COPPER PENNY ★



SANDSTONE ■ ▲



SILVER ★



SILVERSMITH



WEATHERED ZINC ★



ZINC ★

★ Energy Star Rated

■ Post-Painted

● Must Specify Supplier

▲ Available in 3 other Stone Colors

Our colors are deep, rich and true. Made of Valspar's Fluorpon® High Performance Hylar 5000®/Kynar 500 finish, they offer the ultimate in resistance against fading and weathering. Custom colors are also available.

METAL EDGE SYSTEMS

QUICK REFERENCE GUIDE

		GALVANIZED STEEL		ALUMINUM		
		22 GA	22 GA	.040"	.050"	.063"
HYLAR 5000®/KYNAR 500®	Almond	◆	◆	◆	◆	
	Bone White	◆	◆	◆	◆	◆
	Cardinal Red (Regal)	◆			◆	
	Charcoal Gray	◆	◆	◆	◆	
	Cityscape	◆	◆	◆	◆	
	Colonial Red	◆	◆	◆	◆	
	Dark Bronze	◆	◆	◆	◆	◆
	Midnight Bronze	◆	◆	◆	◆	
	Evergreen	◆				
	Forest Green (Sherwood)	◆	◆	◆	◆	
	Glossy Black ★	◆	◆	◆	◆	◆
	Granite	◆	◆	◆	◆	
	Hartford Green	◆		◆	◆	
	Hemlock Green	◆		◇	◆	
	Hunter Green	◆				
	Mansard Brown	◆	◆	◆	◆	
	Matte Black ★	◆	◆	◆	◆	◆
	Medium Bronze	◆	◆	◆	◆	◆
	Musket Gray	◆	◆		◆	
	Patina Green ★	◆			◆	
	Interstate Blue (Regal)	◆	◆		◆	
	Sky Blue (Military)	◆	◆	◆		
	Slate Blue	◆				
	Slate Grey	◆	◆	◆	◆	
	Sandstone	◆	◆	◆	◆	◆
	Sierra Tan	◆	◆	◆	◆	
	Stone White	◆	◆	◆	◆	◆
	Terra Cotta	◆		◇	◆	
PREMIUM	Champagne Metallic	◆	◆	◆	◆	
	Copper Penny (Classic)	◆		◆	◆	
	Silver Metallic	◆	◆	◆	◆	◆
	Zinc	◆		◆	◆	
	Weathered Zinc	◆	◆		◆	
	Aged Copper	◆				
	Silversmith			◆		
	SandStone (Spatter Coat)			◆	◆	◆
	Award Blue	◆			◆	
COIL ANODIZED	Black			◆		
	Clear			◆	◆	◆
	Dark Bronze			◆		
	Light Bronze			◆		
OTHER	Mill Finish (3003-H14)	.040" / .050" / .063" / .080" / .100" / .125"				
	110 Copper	16 oz / 20 oz				
	304 - 2B Stainless Steel	20 GA / 22 GA / 24 GA				
	Galvanized Steel	16 GA / 20 GA / 22 GA / 24 GA				
	Galvalume Plus	22 GA / 24 GA				
	Paint Grip	22 GA / 24 GA				

PLEASE NOTE:

Express colors available in shorter lead times for 24 ga., .040" and .050" only. Standard lead times, which may be longer, apply for 22 ga. and .063".

Protective film must be removed immediately. Please note this chart is only a representation of color options. Color matches should only be made with actual samples. Please call or write for actual metal sample(s).

Metal-Era receives metal through multiple vendors. If a specific metal vendor is required for a project, please specify this at the time of order.

These color reproductions are as accurate as modern printing technology will permit and may vary slightly from actual colors supplied. Finished color chip samples are available upon request. Customer is responsible for color selections chosen from printed literature.

Kynar 500® based fluoropolymer coating is a high-grade architectural finish offering excellent resistance to degradation caused by nature's elements and airborne contaminants. A limited 30-year warranty is available on the prefinished coil-coated steel and aluminum colors shown.

A limited 10-year warranty is included for post-painted Kynar®-coated aluminum applications unless otherwise stated. A 20-year warranty is also available only upon request at the time of order. Restrictions may apply; consult a sales representative for specific information.

Standard anodized finishes that utilize a continuous coil anodizing process to provide excellent color consistency from piece to piece are available. However, shade variations may occur from coil batch to coil batch. Class I batch anodizing is also available.

As noted, many colors are energy star rated. Emissivity uses ASTM C1371. Reflectivity uses ASTM C1549.

Kynar 500® is a registered trademark of Arkema, Inc. Valspar is a registered trademark of Valspar Sourcing, Inc.

©2021. All statements made herein are based on performance and testing and are believed to be accurate and reliable. However, the statements are made without guarantee and warranty on our part. Statements concerning possible use of our products are made without knowledge of infringement of any valid patent. No warranty, express or implied, other than that described in this literature, is made or intended. Kynar 500® is a registered trademark belonging to Arkema Inc.

★ Must specify supplier. Contact Performance Roof Systems for specific color information.

◇ Limited stock available.



**PERFORMANCE
ROOF SYSTEMS™**
A SOPREMA GROUP COMPANY

www.performancerooftsystems.us

4800 Dr. Martin Luther King Jr. Blvd., Kansas City, MO 64130
TOLL FREE: 800.727.9872 TEL: 816.921.0221