

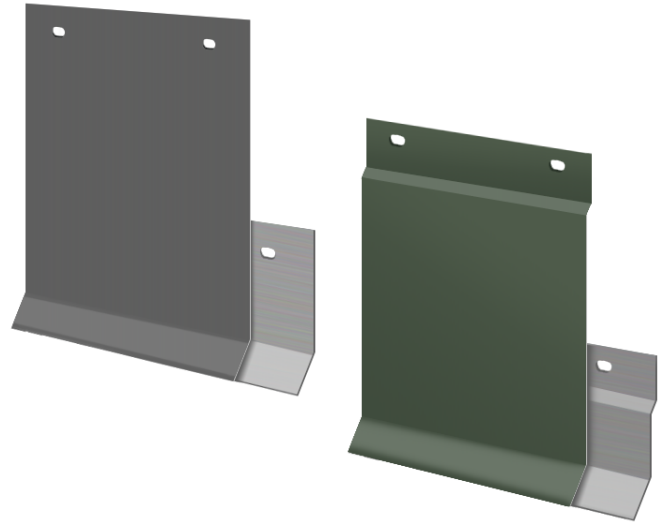
DERBIGUM EXTENDER

DESCRIPTION

DERBIGUM Extenders are used in conjunction with other metal edge details to create a professional termination around roofs with a broader perimeter edge. Available with or without offset DERBIGUM Extenders are available in four face heights to accommodate most design requirements.

FEATURES & BENEFITS

- ▶ Available in four face sizes high to accommodate most requirements.
- ▶ End caps and standard 90° inside and outside miters are available
- ▶ Concealed splice plate enhances color continuity, prevents water infiltration at joints and maintains overall professional appearance.
- ▶ Carefully designed and tested to comply with ANSI/SPRI/ES-1 the International Building Code.



TYPICAL PROPERTIES

Anchor Bar	10' lengths, 24 ga. galvanized cleat pre-slotted holes for fasteners to ensure proper placement
Fasteners	1-1/2" Stainless steel ring shank nails
Face Heights	Available in 2 - 8 inch face heights
Fascia Cover	Manufactured in 10' lengths and available in the following materials: 24 ga Steel .040" aluminum .050" aluminum .063" aluminum
Finishes	- Natural mill-finish aluminum - Pre-coat Kynar® 500 - Premium metallic Kynar - Anodized aluminum – clear, bronze, and black - Custom post-painted Kynar finishes available upon request

COLORS & FINISHES

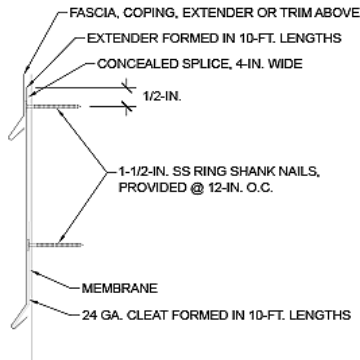
Express, standard and premium colors and finishes are available to meet your job requirements. Includes a 30-year Kynar 500 finish warranty on coil-coated standard colors. Custom colors are also available. For the most accurate color representation contact your Performance Roof Systems Sales Representative to request a paint chip.

TECHNICAL SERVICES

Engineering and shop drawings are available from the factory. Product samples, detail sheets, color chips and color charts are ready for your submittal package. Long form specifications and CAD details are available on our web site. For personal assistance with questions or submittals, contact Performance Roof Systems Technical Services.

TECHNICAL DRAWINGS

Extender



Extender With Offset

